

CABLE 366 RF: RF CABLE ASSEMBLY, MURATA JSC PLUG + SMA STRAIGHT BULKHEAD JACK + 0.81MM CABLE - 6GHz

SPECIFICATIONS:

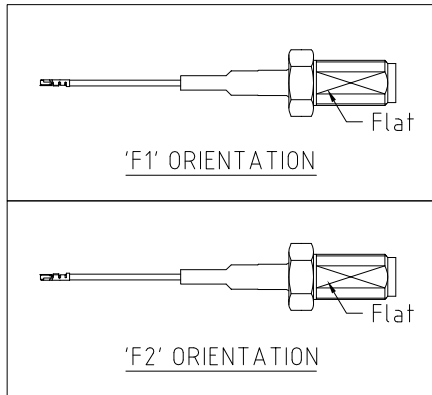
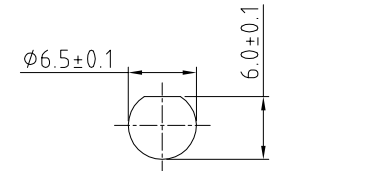
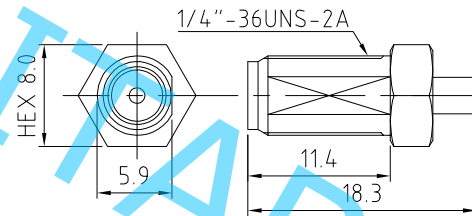
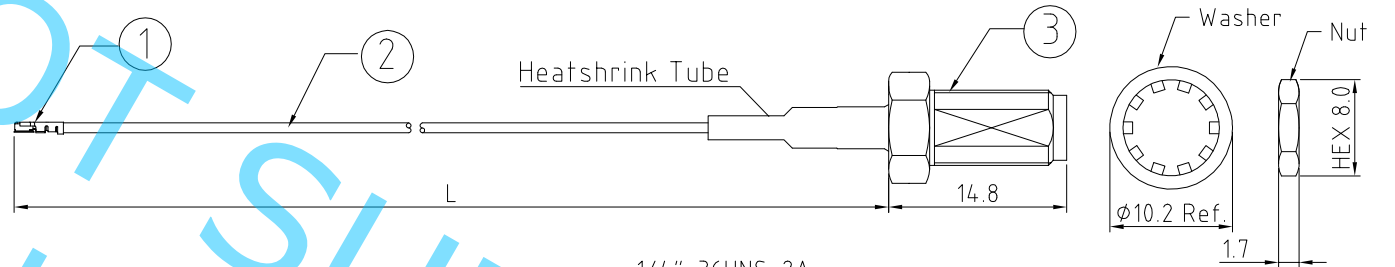
1. MURATA JSC PLUG, P/N: MXJA01
2. 0.81MM COAXIAL CABLE, COLOR: WHITE
3. SMA STRAIGHT BULKHEAD JACK, GOLD, P/N: RFCT-SMA049-F08

NOTES:

1. THE ORIENTATION OF CONNECTORS ON DRAWING IS FOR REFERENCE ONLY, IF THE ORDER IS LEFT BLANK THE CONNECTOR WILL NOT HAVE FIXED ORIENTATION.
2. FIXED ORIENTATION IS SUGGESTED FOR CABLE LENGTH 50MM TO 100MM. PLEASE SPECIFY THE FIXED ORIENTATIONS FROM THE ORDER CODE (F1 F2, ETC)
3. CONTACT GRAD CONN IF THE ORIENTATION YOU REQUIRE IS NOT SHOWN.
4. WORKING FREQUENCY RANGE: DC-6GHz
5. OPERATING TEMPERATURE: -40°C TO +85°C
6. IMPEDANCE: 50 OHM.
7. VSWR: 1.5 MAX.

USAGE PRECAUTIONS: CABLES USING 'MICRO' COAX ARE DELICATE:

- (i) HANDLE WITH CARE.
- (ii) DO NOT TWIST; APPLY EXCESSIVE FORCES OR SHARP BENDS TO THE CABLE. DO NOT FORCEFULLY DEFORM WIRES.
- (iii) CONSULT CONNECTOR MANUFACTURER'S DATASHEETS FOR DETAILED NOTES ON HANDLING INSTRUCTIONS.



HOW TO ORDER

CABLE 366 RF - X X X - X X - X

"L" LENGTH IN MM
 eg: 100MM = 100
 (MIN. = 050, MAX. = 400
 STANDARD = 100, 150, 200)
 Tolerance: 50mm : ±2mm.
 51-200mm : ±5mm.
 201-400mm : ±7mm.

WASHER AND NUT OPTIONS:
 BLANK = SEPARATELY PACKED (STANDARD)
 A = ALL ASSEMBLED WITH CONNECTOR

ORIENTATION OPTIONS:
 BLANK = DOES NOT HAVE A FIXED ORIENTATION
 F1 = JSC CONNECTION DOWN (L=50-200MM)
 F2 = JSC CONNECTION UP (L=50-200MM)
 (SEE NOTES 1, 2, 3 AND DIAGRAMS FOR MORE INFORMATION)

REV. DATE & DRN
 10 22/11/19 - NYW RELEASE
 11 28/04/20 - NYW
 ADD NOTE 7

Scale: NTS	THIRD ANGLE	Unstated X .XX .XXX ANGLES	Tolerances: N/A N/A N/A N/A	Material SEE NOTE
Drawn: NYW				
App'd: XXX	Title CABLE ASSEMBLY	NOT TO SCALE		
Date: 28 APR. '20	Revision: 1.1	Unit: mm		

www.gradconn.com

THIS DRAWING IS CONFIDENTIAL AND MUST NOT BE COPIED OR DISCLOSED WITHOUT WRITTEN CONSENT

Type: Cable 366 RF
CABLE 366 RF
Drawing Number:
Sheet 1 of 1
Drawing © E and O E